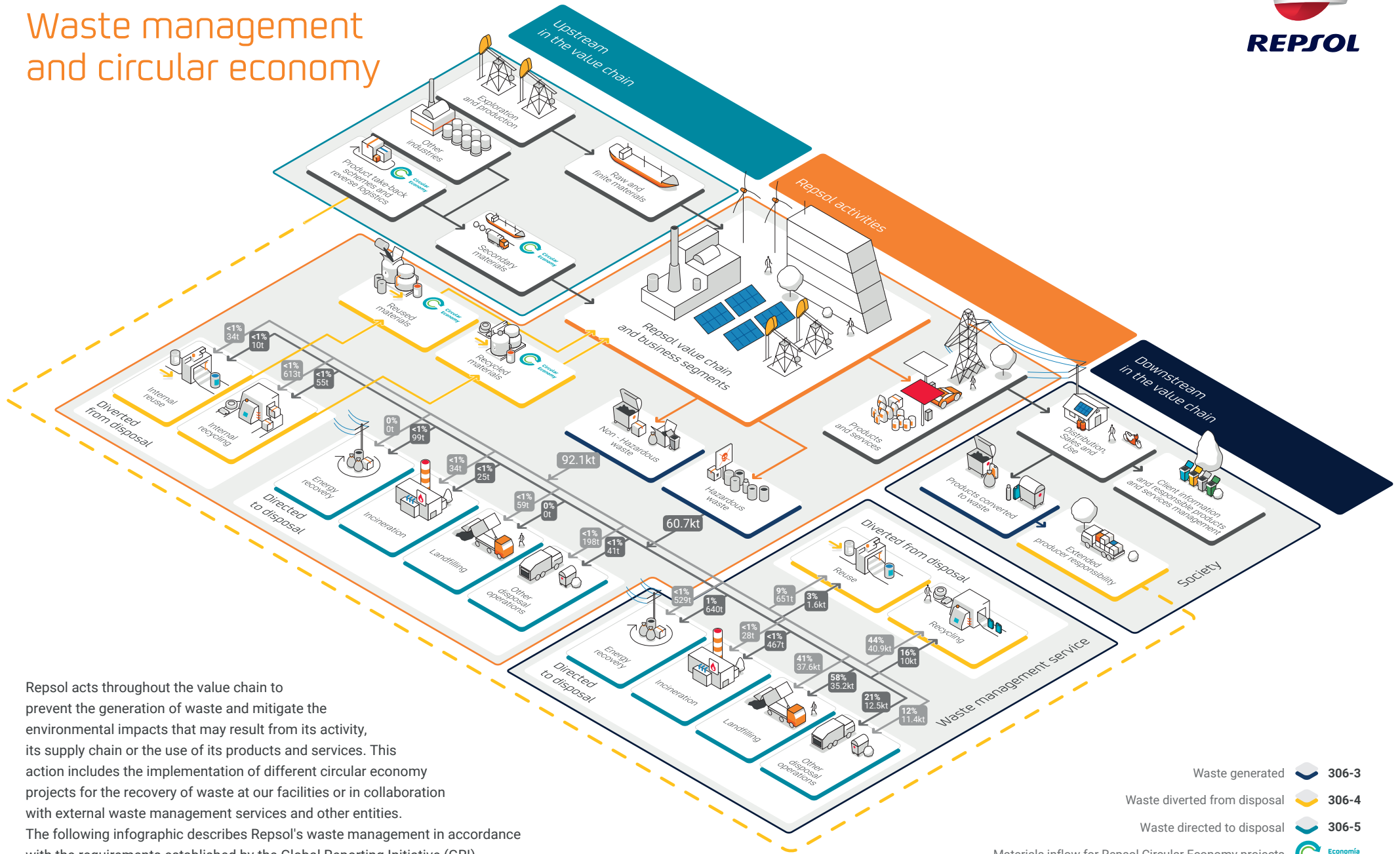


# 2022

## Waste management and circular economy



Repsol acts throughout the value chain to prevent the generation of waste and mitigate the environmental impacts that may result from its activity, its supply chain or the use of its products and services. This action includes the implementation of different circular economy projects for the recovery of waste at our facilities or in collaboration with external waste management services and other entities. The following infographic describes Repsol's waste management in accordance with the requirements established by the Global Reporting Initiative (GRI).

Waste generated 306-3  
 Waste diverted from disposal 306-4  
 Waste directed to disposal 306-5  
 Materials inflow for Repsol Circular Economy projects Economic Circular

Composting is included as a form of recycling.