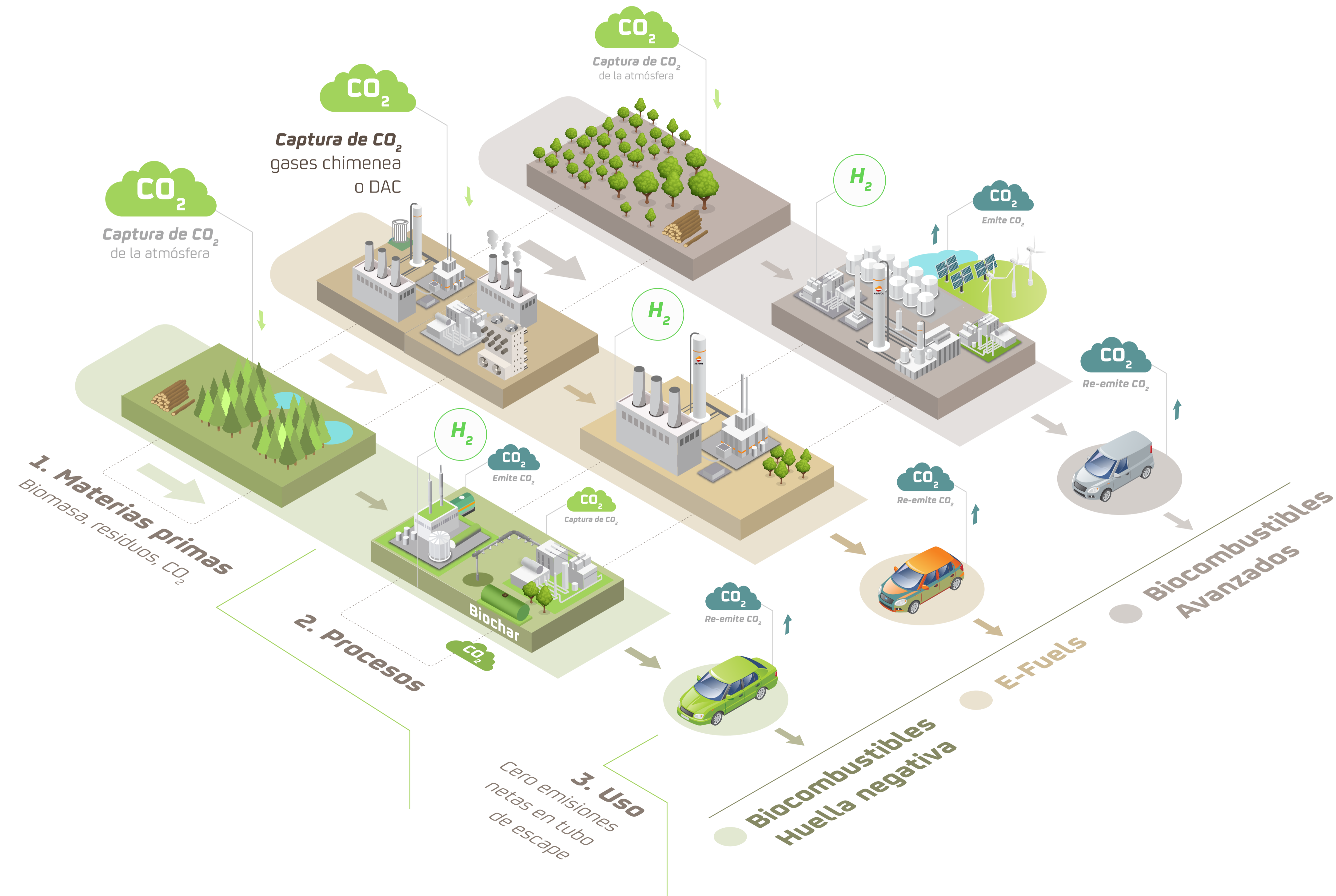
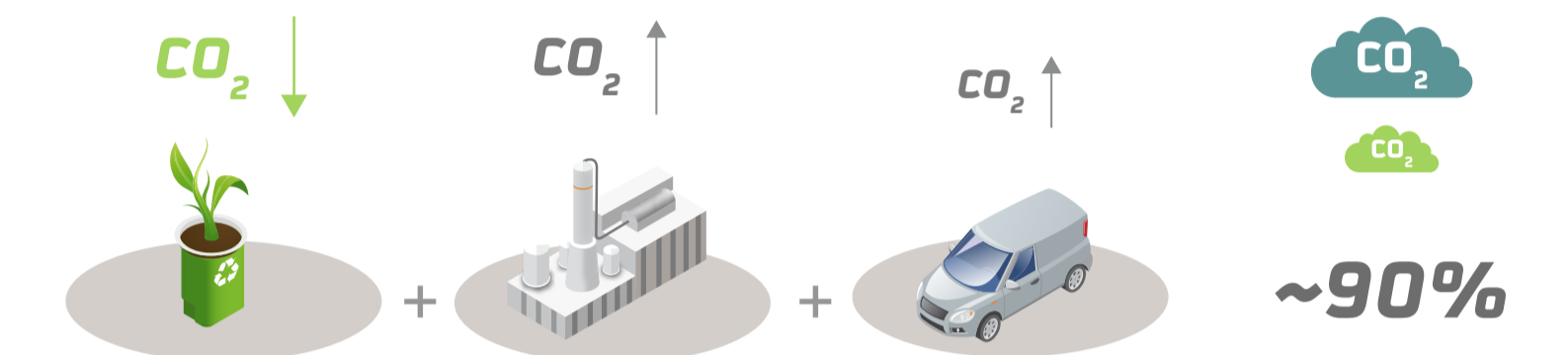


Balance de emisiones de CO₂ en combustibles de baja huella de carbono

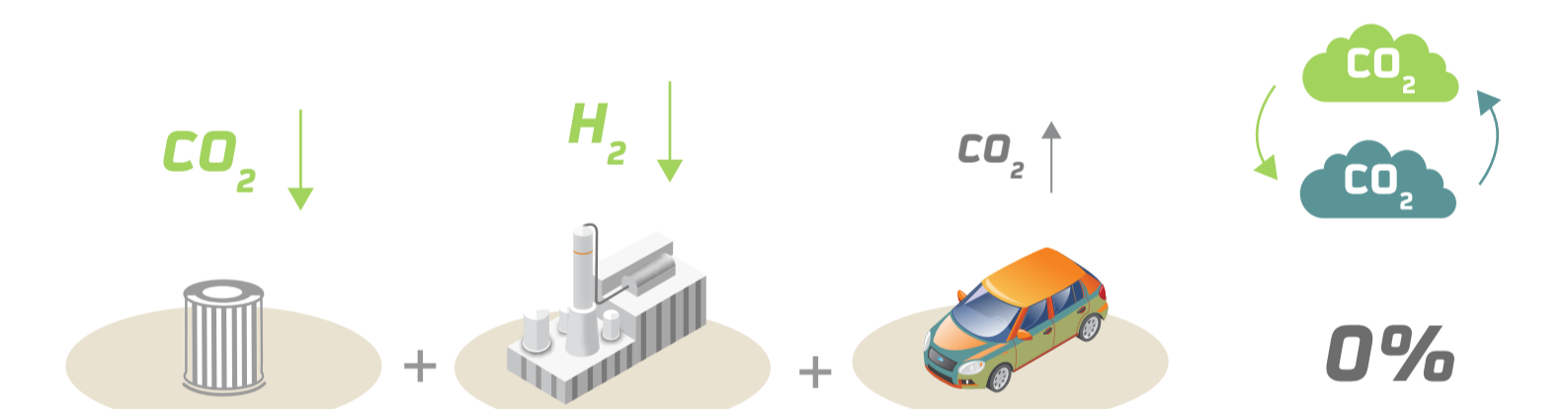


EMISIONES NETAS

- **BAJA HUELLA (Biocombustibles avanzados)**
1. [absorbe CO₂] + 2. [emite algo de CO₂] + 3. [emite CO₂]
= **CO₂ reducido** (respecto a combustible convencional)



- **HUELLA NETA 0 (E-fuels)**
1. [absorbe CO₂] + 2. [no emite CO₂] + 3. [emite igual que absorbe CO₂ en chimenea o DAC] = **CO₂ cero**



- **HUELLA NEGATIVA (Biocombustibles avanzados)**
1. [absorbe CO₂] + 2. [captura CO₂ de chimenea, fijación CO₂ biochar / almacenamiento] + 3. [emite CO₂]
= **Fijación de CO₂ capturado**

